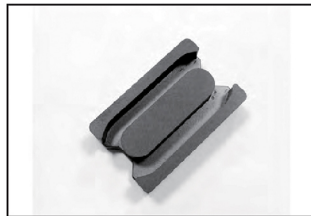


EI CORE

TYPE	FIG.	Dimensions(mm)					
		A	B	C	D	E	F
EI19/16/5	1	19.2±0.5	13.7±0.3	4.9±0.3	4.7±0.3	14.0min	11.5±0.3
EI22/19/6	1	22.0±0.5	14.9±0.3	5.7±0.3	5.7±0.3	15.8min	11.0±0.3
EI25/19/6	1	25.4±0.5	16.3±0.4	6.3±0.3	6.3±0.3	18.6min	13.3±0.4
EI28/20/10	1	28.1±0.5	17.1±0.3	10.4±0.3	7.1±0.3	18.9min	12.8±0.4
EI30/27/11	1	30.6±0.4	21.5±0.3	10.65±0.3	10.65±0.3	20.25min	16.5±0.3
EI33/29/13	1	33.2±0.6	24.3±0.4	12.7±0.3	9.5±0.5	23.2min	19.4±0.4
EI40/35/12	1	40.0±0.7	27.0±0.5	11.6±0.4	11.6±0.4	27.2min	21.25±0.3
EI50/42/15	1	50.0±1.0	33.4±0.4	14.6±0.4	14.6±0.3	33.5min	24.75±0.3

ED CORE

TYPE	FIG.	Dimensions(mm)					
		A	B	C	D	E	F
ED25/10/12	2	25.0±0.4	5.15±0.15	12.15±0.2	21.6±0.3	8.1 min	1.5±0.15
ED28/20/12	1	28.0±0.5	10.4±0.3	12.1±0.5	8.5±0.2	20.5 min	6.7±0.3
ED29/20/12	1	29.3±0.8	10.2±0.3	11.6±0.3	8.5±0.2	21.5min	6.85±0.25
ED29/30/12	1	29.8±0.8	14.8±0.2	11.6±0.2	8.4±0.2	21.8 min	11.2±0.2
ED40/20/22	1	40.8±0.5	9.7±0.2	21.85±0.25	11.0±0.3	30.3 min	6.25±0.25
ED47.4/32.2/29	1	47.4±1.2	16.1±0.3	29.0±0.35	15.0±0.3	33.0min	8.9±0.3

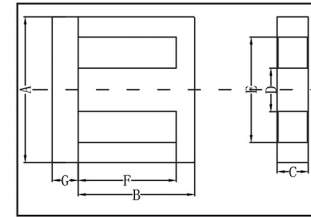
EI CORE

FIG.1

G	Cl (mm ²)	Ae (mm ²)	Le (mm)	Ve (mm ³)	AL±25%(nH/N ²)			Weight g/PRS
					FW40	FW44	FW95	
2.4±0.2	1.50	26.30	39.10	1029.0	1200	1200	1510	4.70
3.6±0.3	1.32	32.49	42.90	1686.0	1790	1800	2400	7.70
3.0±0.3	1.07	46.00	49.10	2270.0	2000	2000		10.00
3.5±0.3	0.57	85.10	48.60	4139.0	3800	3600	4500	24.00
5.5±0.2	0.54	110.12	59.64	6568.0	4000	3800	5100	38.10
4.75±0.3	0.57	118.10	66.90	7909.0	4100	3800	5000	41.50
6.5±0.3	0.55	140.00	76.80	10750.0	4400	4200	5660	61.00
9.0±0.3	0.41	229.50	94.73	21740.3	5500	5500	7500	111.50

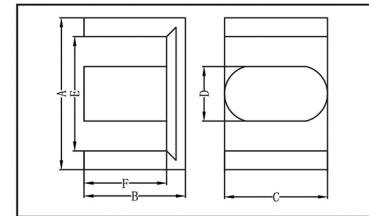
ED CORE

FIG.1

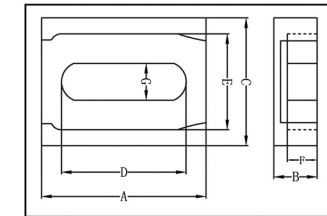


FIG.2

G	Ae (mm ²)	Le (mm)	Ve (mm ³)	AL±25%(nH/N ²)			Weight g/PRS
				FW40	FW44	FW95	
2.95±0.15				4000			11.30
	90.00	50.30		3800			22.00
	84.00	51.90	4360.0	3200			22.00
	90.00	69.20	5789.2	2750			29.50
	203.00	61.30				11500	65.00
	415.00	76.70	31830.0	7500			159.00